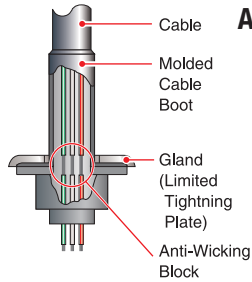


TSURUMI PUMP
Superior Design & Technology



Anti-Wicking Cable Entrance:

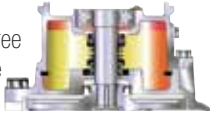
Maximum protection against water incursion through the cable entry.

- Molded Cable Boot or Cable Protection Tube - extends cable bending radius, prevents abrading, and reduces fatigue.
- Cable Gland - provides 360 degree compression of cable boot, protection tube or cable bush for a water tight fit.

- Anti-Wicking Block - window cuts on conductor insulation expose strands to molded rubber or epoxy to prove water wicking through the strands and entering the motor providing protection even if the cable insulation is cut.

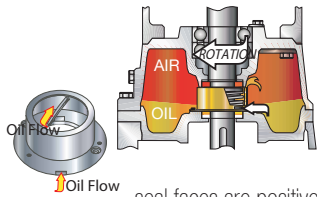
Dual Inside, Silicon Carbide Mechanical Seal:

Isolation of mechanical seals in an oil chamber provides a clean, non-corrosive and abrasion free lubricating environment to prevent spring failure due to corrosion or abrasion and bottom seal failure due to loss of cooling during dry-run conditions.



Oil Lifter (Patented):

Tsurumi's exclusive Oil Lifter encloses the mechanical seal and uses the centrifugal force generated by the rotating shaft and seal to pump oil to the upper seal faces. Upper and lower seal faces are positively lubricated even when extremely low oil levels exist, as experienced after long periods of extended operation.



High Performance Motor:

Dry type, squirrel-cage, induction motor, housed in a watertight casing, conforms to either insulation class B or E, or F. In both of these classes, all standard pumps can be used in ambient temperature up to 104°F (40°C).



Built For Work - Choose Tsurumi Pump for your water feature needs



Water Feature Pumps

for ponds & waterfalls



Tsurumi (America), Inc.

1625 Fullerton Court, Glendale Heights, IL 60139
 Tel: (888) 878-7864 • Fax: (630) 793-0146

www.tsurumipump.com

TAL_WF_trifold_AUG2012



Pumps for Pond & Waterfall

Water Feature Pump - OM • PU • PN Series



Energy-Efficient Design & Reliable Operation

Reliable and Efficient. There are a lot of choices looking for a pump for your water feature. Don't be fooled by all of the imposter pond pumps out there. Only a Tsurumi Water Feature pump is as reliable and efficient as a Tsurumi Pump.

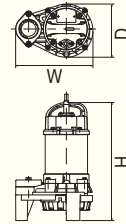
OM, PU & PN Series Features & Applications:

- Corrosion Resistant
- Durable Resin Molded Parts aid in longer pump life
- Eco-Friendly Operation
- Best for fish ponds and decorative waterfalls
- Guide-rail system available

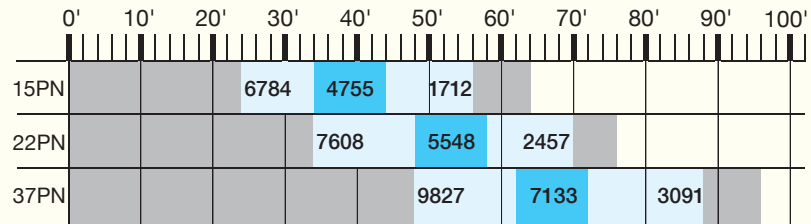
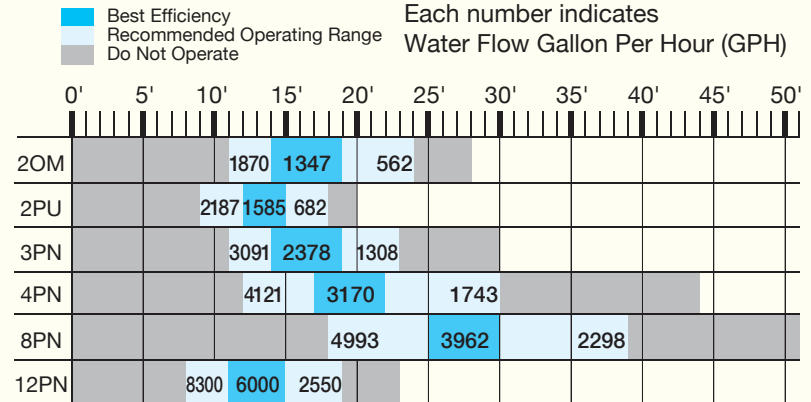
Specifications:

Pump Model	Discharge Size (in.)	HP	Phase (Ø)	Voltage (V)	Amps	Cable Length (ft.)	Dimension (W x D x H, in.)	Pump Weight (lbs.)
2OM	1 1/2	1/5	1	115	3.2	20	8 x 6 x 12	13
2PU	2	1/5	1	120	3.1	20	9 x 6 x 15	13
3PN	2	1/3	1	115	4.6	32	9 x 6 x 14	16
4PN	2	1/2	1	115	5.8	32	9 x 6 x 14	16
8PN	2	1	1	115	8.7	32	9 x 6 x 15	20
12PN	3	1	1	115	8.7	20	12 x 8 x 15	32
15PN	3	2	3	*220	6.6	32	12 x 8 x 17	35
22PN	3	3	3	*220	8.5	32	12 x 8 x 22	48
37PN	3	5	3	*220	13.4	32	12 x 8 x 23	59

Other voltages are available upon request. *220V Inverter Panel required.



Flow Chart:



Specialty Pumps

Water Feature Pump - HF Series

High-Flow Water Feature Pump For circulating water in pond or waterscape garden

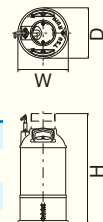
HF Series Features & Applications:

- Delivers greater water flows
- 304 Stainless Steel motor casing, fasteners and shaft
- High-Flow design with an axial-flow impeller

Specifications:

Pump Model	Discharge Size (in.)	HP	Phase (Ø)	Voltage (V)	Amps	Cable Length (ft.)	Dimension (W x D x H, in.)	Pump Weight (lbs.)
4HF	4	1/2	1	115	7.9	16	10 x 10 x 22	40
8HF	4	1	3	*220	3.5	32	10 x 10 x 22	42
15HF	6	2	3	*220	6.3	32	11 x 11 x 25	97

*220V Inverter Panel required.



Flow Chart:

